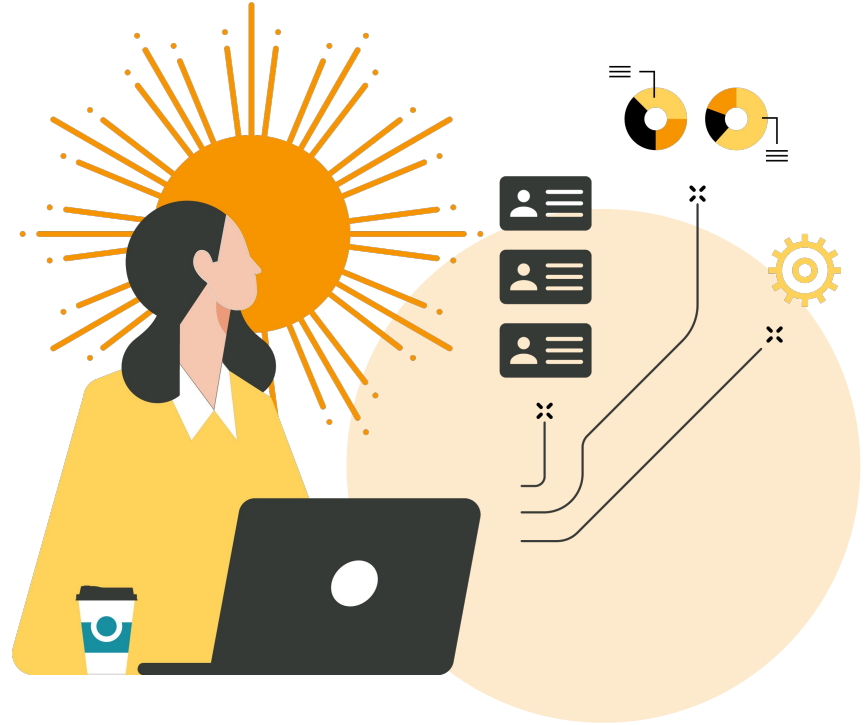


Assessment and Credentialing

3.115 Release Webinar



Agenda

- Release Timing
- Exciting New Features & Improvements
 - Reporting Enhancements
 - Course Eval Improved Admin Flexibility
 - Main Menu Favoriting
 - Program Editing/Revision Permissions
 - UI Upgrades
- Resources

Release Timing



Training Release: 4/6/2026



Production A Release: 5/4/2026



Production B Release: 5/18/2026

[Additional Information](#)

Reporting Enhancements

Key Benefits

- **NEW “Show Results of Courses by” parameter!** – A new parameter has been added to two (2) of our newest Assessment reports that will allow for these reports to be used by Program Coordinators and Course Coordinators
- **NEW “Linked Assignment Type” parameter!** – A new parameter has been implemented for our Assignment reports to filter data for broken (requires action) assignment links vs. valid assignment links.
- **Reworked Curriculum Map Report** – Redesigned the parameters, permissions, and made some layout changes to the *Curriculum Map* Report

Course Eval Improved Admin Flexibility

In an effort to continue enhancing the capabilities of Course Evaluations, we've made the following changes in an effort to support improved flexibility and ease of management by administrators:

Key Benefits

- **NEW Section Metadata schedule filter** – When scheduling your course evaluations, you can now choose to filter your participant pool up front based on Session, Schedule, or Delivery Mode. All of these are optional metadata fields that can be provided via the Section SFTP file in order to use this filter.
- **Improved Flexibility when configuring Rollup Questions placeholder** – Currently, the Rollup Questions placeholder, if added to a survey template, will populate all possible questions added at the Institution, College, Dept, Course, Section levels. You will now have the ability to specifically define which level(s) to populate question from.

Main Menu Favoriting

As a part of our continuation of UI upgrades, we've heard your feedback of wanting Main Menu favoriting to return to the platform! As such, a slightly redesigned feature has been added back to your Assessment platform Main menu for all users.

Key Benefits

- **Conditional Display of Favorites menu** – Only populates as a separate menu item once you add your first favorite.
- **New process for adding/removing favorites** – By using the heart icon and trashcan icon, you can easily add new favorites and delete existing ones from the menu.
- **Personalize your favorites** – Each user favorites are unique to that user. This allows for your end users to put their personal touch on what are the key areas they typically go to most often.

Program Editing/Revision Permissions

Previously, we had released a setting to manage which administrator role(s) should be able to create programs in the Program Manager. This setting has since been expanded:

Key Benefits

- **Renamed setting with expanded functionality** – The prior setting is renamed to “*Enable Program Creating, Editing, and Revising*”. You can still configure whether Program Coordinators, Department Admins, College Admins, Institution Admins (or some combination of multiple) should have this authority.
- **New functionality** – If configured for 1+ roles, this will allow/disallow for program creation, as well as the ability to revise/edit programs that are already in existence. By doing so, you can ensure appropriate security measures over your programs to only designated roles (if any).

UI Upgrades

As we continue to enhance our User Interface platform wide, the following pages have been upgraded improve the user experience, flexibility, and accessibility by end users:

Key Benefits

- **Key Assignment Designer** – This location is used for creating “Key Assignments” for the purposes of Juried Assessment as well as for building Helio assignment templates to be imported down into Courses/Activities. This page has been upgraded to include a fully redesigned creation experience as well as a new Key Assignment type specifically for Juried Assessment to reduce the time spent on setup.
- **Rubric Criteria Library** – This location is used for creating standardized Rubric criteria that can then be imported for use in Helio Assignments. A fully redesigned rubric criterion creation UI has been implemented on this page as well as in Key Assignment Designer above.

Resources

[Complete 3.115 Release Notes](#)

[Sustain Through Anything
Webinar Series – Register Here](#)

General Resources

Assessment & Credentialing Knowledge Base: bit.ly/47ZxQen

HelioCampus Blog: heliocampus.com/resources/blogs

Previous HelioCampus Webinars: heliocampus.com/resources/webinars

HelioCampus eBooks and White Papers: heliocampus.com/resources/ebooks

Monthly Office Hours, last Wed of the month, 2–3 pm. Visit the [Office Hours Dashboard](#) for details

Community Programs for 2026



Learning Journey Unlocked

Learn more about the ins and outs of the new HelioCampus Learning Journey.

[Register Here](#)

March- June 2026



HelioCampus on Tour

Join us in a city near you for client-led sessions, product roadmaps and more.

March - May 2026



Client Webinar Spotlight Series

Share your story! We'll be featuring use cases across our products.

[CFP Here](#)

Ongoing in 2026



Thank you